

WELCOME TO EYEMED

Vision benefits
for every set
of eyes

Wesleyan University

**eye
Med**



Select Network

Group ID: 9766387

Frequency is Calendar Year



\$200 frame allowance
every 2 calendar years



\$20 base lens copay
every calendar year or...



\$200 contact lens
allowance, with coverage
for fit and follow-up
every calendar year

- Plan allows the member to receive either contacts and frame, or frame and lens services

Member tools

Member Portal & App

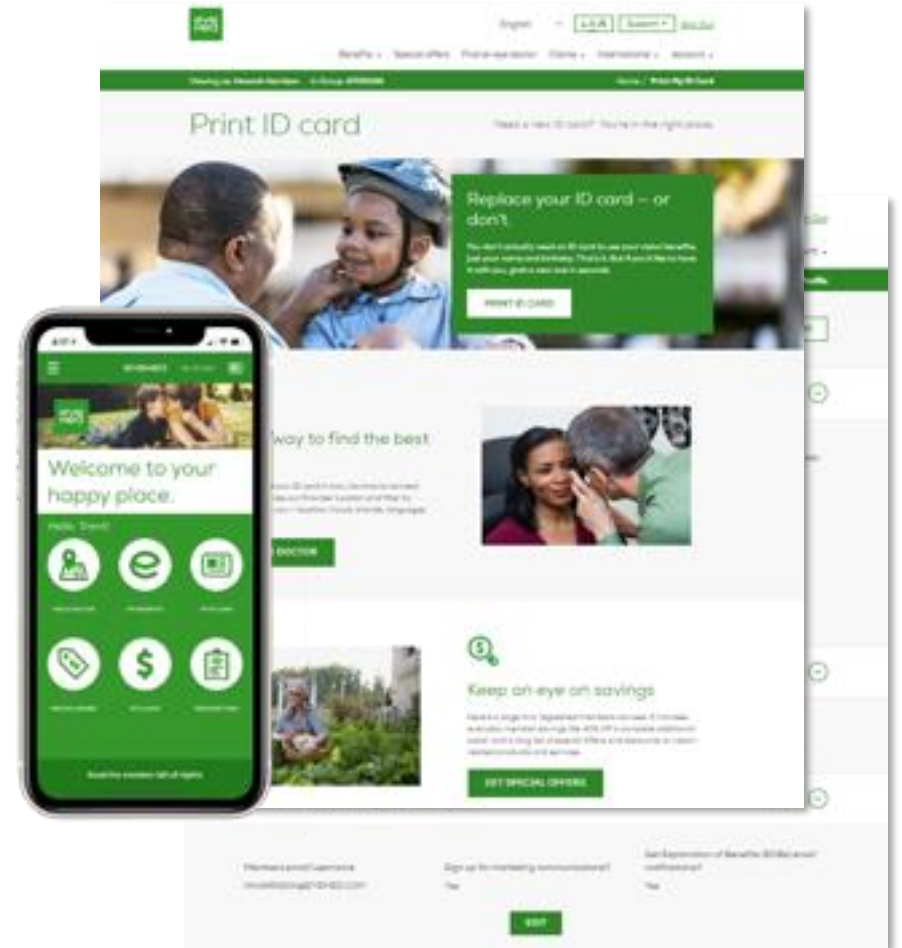
- Enhanced provider search with online appointment booking
- View benefits and eligibility
- Know Before You Go tool
- Shop savings with special offers
- Download ID cards and EOBs
- Check claim status
- Savings summary
- **App has facial recognition***

Text alerts

- Quick tips and guides
- Special offers
- Wellness information

Call center

- **866.723.0513**
- Locate in network providers
- Answer claims questions
- Benefit and eligibility questions

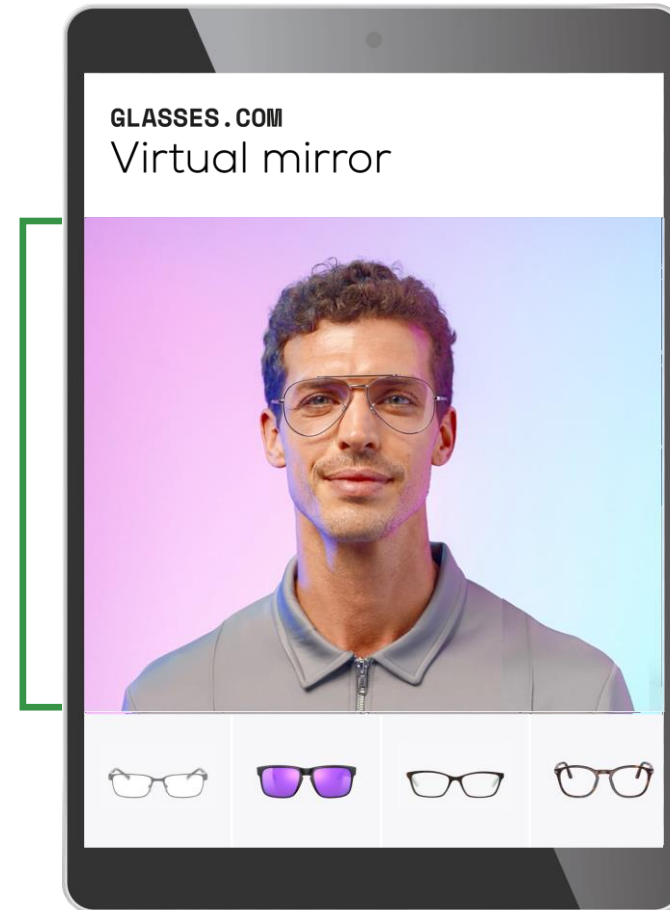


ONLINE IN-NETWORK

Our online providers offer the brands members want most

We're helping set the standard with a seamless online in-network experience.

- One of the **widest selections**
- **Benefits applied in cart**—no paperwork or claims to file
- **Virtual try-on and Frame Advisor tools**
- **Easy prescription verification**—just snap a pic and send
- Shop online with **in-store adjustments**
- **Free shipping and return**



15,000+ frame styles

ONE OF THE LARGEST ONLINE COLLECTION OF EYEWEAR AND LENSES

LENSCRAFTERS®

OPTICAL™

contactsdirect

Ray-Ban

GLASSES.COM

OAKLEY*

*Insured benefits cannot be used on Oakley® custom sunglasses, ski goggles or accessories, footwear and apparel.

Confidential Notice: This document contains proprietary information and is for the sole use of the intended recipient(s). Disclosure or distribution to and review or use by any unauthorized Luxottica EyeMed associate(s) and external parties is prohibited. Fully insured clients are underwritten by: Fidelity Security Life Insurance Company®, Kansas City, MO 64111

PPT-2310-CB-775



Special offers for 2024¹

Rotating offers currently include:*

• **Lasik Plus:** Use up to \$1,000 at Lasik Plus

• **Pearle Vision:** \$50 off a complete pair of single vision lenses or \$100 off a complete pair of progressive lenses

• **Contactsdirect:** Save 10%²

• **Glasses.com:** Get an additional \$30 to use on anti-reflective lenses

offers expire 12/31/2024. See offer for exclusions.

5 Confidential Notice: This document contains proprietary information and is for the sole use of the intended recipient(s). Disclosure or distribution to and review or use by any unauthorized Luxottica EyeMed associate(s) and external parties is prohibited.

Everyday discounts*

- 40% off additional pairs of glasses
- Discounted, set pricing on hearing aids with Amplifon
- 20% off any remaining frame balance
- 20% off noncovered items
- 15% off LASIK or 5% off promotional pricing

1 Please see Special Offers on Member Web for details. 2 Offer can be combined with vision benefits but cannot be combined with other offers. 3 Average EyeMed member savings off manufacturer's suggested retail price as of 2021 through Amplifon Hearing. Prices differ based on hearing aid model purchased. Your actual savings may vary.





eye
Med

Thank you
Wesleyan
University

Learn more at
eyemed.com/enroll



PPT-2009-M-656